

TDSi's unique reader technology, unrivalled in its all-weather performance and reliability, provides total security coupled with unbeatable value.

Although the traditional lock and key plays a major role in securing rooms, buildings and other areas, its shortcomings are obvious where large buildings or high security sites are concerned and personnel access has to be closely monitored and recorded.

The 'key' of an access control system may be a device such as a magnetically encoded card. The card offers much more security because it is much more difficult to copy. A card reader interprets the encoded card and controls an electric lock.

The advent of low cost personal computers and their associated software packages has dramatically increased the flexibility and features now available for access control, offering distinct user benefits.

#### eXguard LITE feature list

Max. card capacity	5,000
Max. doors	8 or 16
Max. operators	No limit
Anti pass-back	Timed
Mantrap	Yes using 2 doors controlled by one eXcel <sup>2</sup>
Time groups	64
Card expiry by date	Yes
Personnel data	18 fields
Site Plans	Yes
Real-time event lists	Yes
Real-time alarm notification	Yes
Person tracking	Yes
Attendance reports	Yes
Real-time graphical status display	Yes e.g. doors open/closed
Full on-line help system	Yes
Full backup system	Yes
Communication methods	RS232, RS485 with converter, Ethernet (TCP/IP) with converter

#### eXguard LITE system requirements

Pentium P3, 1 GHz, 256 MB RAM, Windows 98/ME/NT/2000/XP, 10GB Hard Disk, CD ROM

#### Other Considerations

Communication ports as required for direct communication with ACUs

Communication over TCP/IP does not require physical communication ports. RS232/RS485 or Ethernet/RS485 converter(s) required

#### eXcel<sup>2</sup> feature list

Feature	1-door configuration	2-door configuration
Maximum number of readers per door readers may have associated keypads	2	1
Reader technologies supported*	TDSi infra-red Microcard Mag-stripe Track 2 ABA Wiegand 26 BIT Proximity, eXsmart Mifare	TDSi infra-red Microcard Mag-stripe Track 2 ABA Wiegand 26 BIT Proximity, eXsmart Mifare
Egress inputs	1	2
Door sensor inputs	1	2
Card capacity	5,000	5,000
Spare inputs	6	4
Spare relays	3	2
Mantrap	No	Yes
Counters	16	16

\* Only readers supplied by TDSi are supported. Other manufacturers' readers MAY work if the interface meets industry-standard clock/data or Wiegand specifications but this cannot be guaranteed – please contact your supplier for guidance.

#### eXcel<sup>2</sup> technical specification

Case dimensions cm	38h x 33w x 14d
Environment	<b>Temperature</b> -5° C to +45° C <b>Humidity</b> 0-95% rh non-condensing
Power 230V AC version	<b>Input</b> 220- 240V AC 80VA max <b>Output</b> 12V DC 1A for ACU, 2 x 12V DC 1A for locks, 2 x 13.6V for standby batteries
Power 12V DC version	<b>Input</b> 12V DC 500 mA max
Relays	Form C changeover contacts rated at 30V 1A



Time and Data Systems International  
Sentinel House Nuffield Road Poole Dorset BH17 0RE  
Tel 01202 666222 Fax 01202 679730 Email [info@tdsi.co.uk](mailto:info@tdsi.co.uk) Web [www.tdsi.co.uk](http://www.tdsi.co.uk)

# eXguard LITE

eXguard LITE provides simple and effective monitoring and control of buildings and rooms for the smallest organisation through to medium sized organisations.

## Features and Benefits

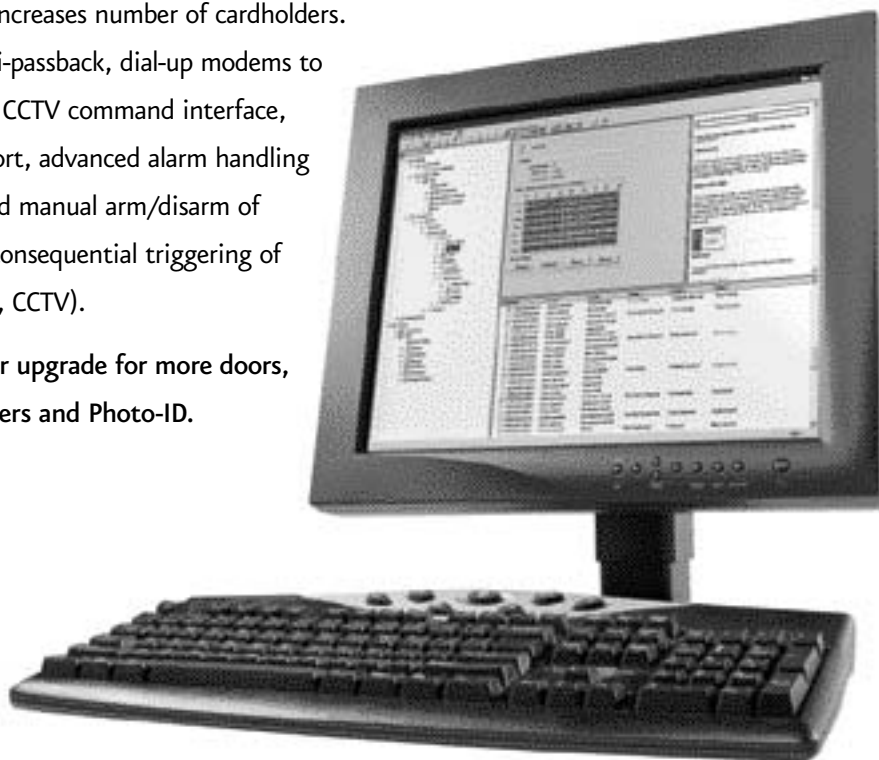
- Windows® 98/ME/NT/2000/XP application
- SQL database
- Easy to install, configure and maintain
- Instant visibility of information
- Site graphics with real-time animation
- Alarm handling
- Multiple real-time event windows

### Upgrade to eXguard PRO

Immediately increases number of cardholders.

Adds true anti-passback, dial-up modems to remote ACUs, CCTV command interface, database import, advanced alarm handling (scheduled and manual arm/disarm of alarm zones: consequential triggering of relays, sounds, CCTV).

Allows further upgrade for more doors, more computers and Photo-ID.



## ACCESS CONTROL

TDSi has a family of systems carefully designed after twenty years of listening to what our customers and users want.

Systems that are easy to install, simple to administer, designed for painless expansion, straightforward care and maintenance, and above all trouble-free operation for the life of the product, all backed by a comprehensive three year warranty. Who could ask for more?

TDSi's access control systems include on-line central computer(s) that record entries and exits by cardholders and store the card database and printer reports. It is now common practice to integrate additional security requirements onto the central PC to provide a cost-effective system solution.

Alarm management, audit trail and building management control, for example, can be integrated onto a central PC to provide a 'bespoke' system solution that is user friendly and allows the customer to realise the maximum potential from his/her investment.

TDSi's smart card and proximity technologies coupled with the unique infrared reader technology, unrivalled in its all-weather performance and reliability provides total security coupled with unbeatable value.

# Some thoughts on why linked systems are such a good idea.

## More features and benefits

### Different operators have different rights

This increases security because they can't do any more than you want them to.

### Lots of data stored against each person incl. photograph

Can be a substitute for a personnel database – finding someone based on data is easy. Privacy of data is protected by operator rights.

### Restriction of people to areas and times

You have the control with temporary cards and multiple cards per person.

### Adding people takes seconds

Access rights are per group. You just make someone a member of a group.

### Event reports are easily created

These can be created for the whole system down to just one person or door.

### Selection of events for alarms

You can choose which events are brought to your attention with alarms.

### Easy to check

See who is in the building or an area. See at a glance whether doors are closed, inputs are active. e.g. window left open

### Realistic Site Plans

Import bitmaps of your site and add animated icons for areas, doors, readers, inputs, outputs etc.

### Controllers work autonomously

Full security at doors is maintained if a computer is off or if a communications line cut.

### Car Park Control

A counter feature allows you to limit car park access.

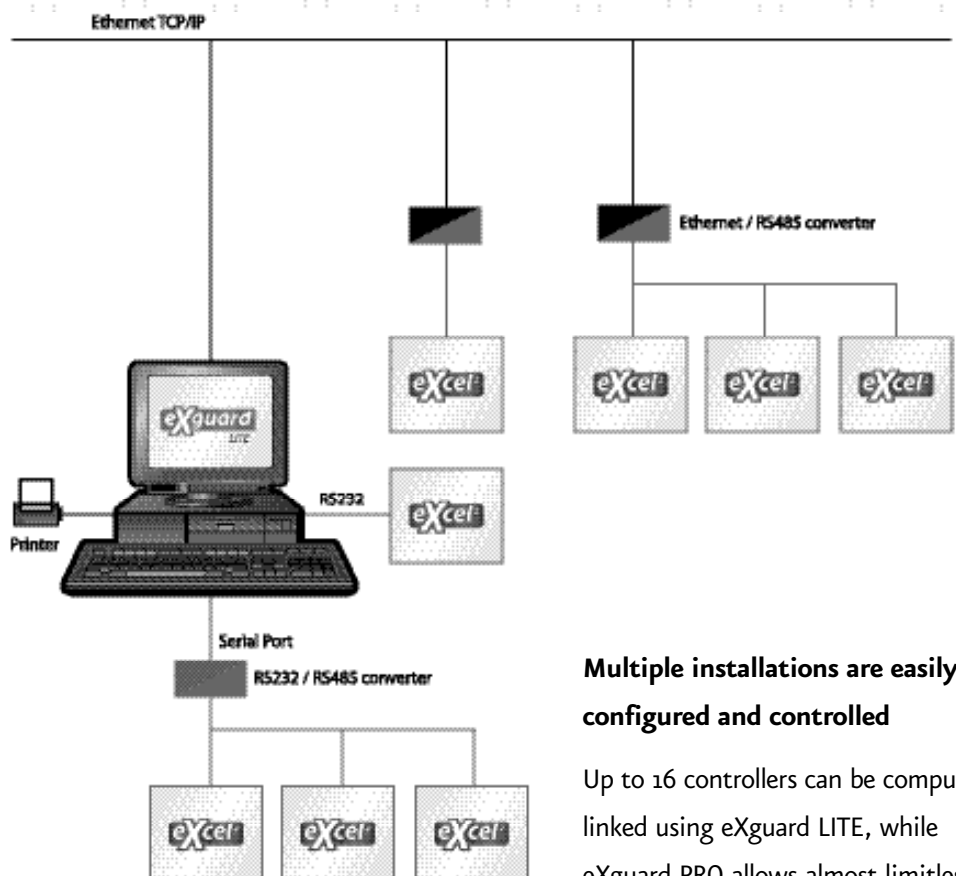
### Instant Occupancy Lists

On demand lists for the entire site, one area or a group of areas.

Imagine you come in one day and something's gone missing. Who was in the building at the time? Were they moving around the building more than usual? Suspicious activity can be easy to spot if you have a record of it.

Now imagine you're about to lock up for the night. Is everyone out of the building? Are all the windows closed? Easy to tell if you have a linked access system.

Normally you work 8 – 6 and people's access rights are limited to these times. One day you need everyone to work overtime at short notice – simple if you can do it all from one easy-to-understand screen.



### Multiple installations are easily configured and controlled

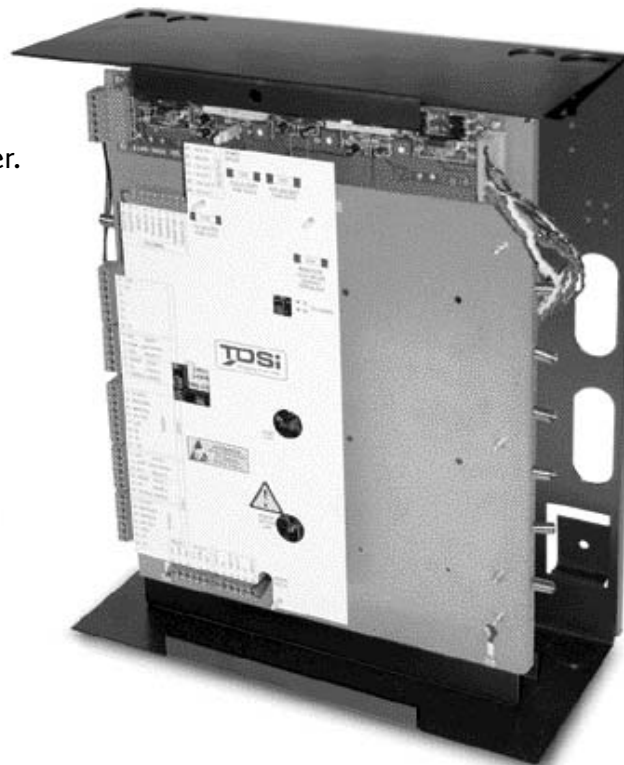
Up to 16 controllers can be computer-linked using eXguard LITE, while eXguard PRO allows almost limitless systems to be monitored and controlled with ease.



eXcel² is a 2-door controller that is programmed and monitored using TDSi's eXguard LITE software. The beauty of this system is its ease of installation and operation for up to 5,000 employees plus the power to upgrade from 2 doors to 8 or 16 doors.

## Features and Benefits

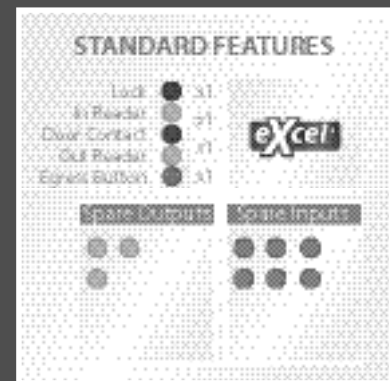
- Big system features at an entry-level price. Spare inputs for monitoring windows, etc. Spare outputs for alarms, heating, lighting, etc. Instant notification of unusual activity (e.g. access denied).
- Provides fast information on staff movements, etc. While stand-alone systems can control access, linked systems are essential to monitor access (not all staff can be trusted all of the time). The software also helps your organisation meet Health and Safety regulations and the Working Time Directive.
- Really easy to install and configure. During installation you can test each door without going back to the computer.
- 2 door controllers are better than 1 door controllers in terms of cost and saving time.
- 2 reader, 1 door configuration provides attendance monitoring and occupancy lists.



As well as having TDSi's legendary reliability and formidable build-quality, this system is totally flexible to your needs. An optional upgrade brings eXguard LITE to eXguard PRO status putting a highly sophisticated and comprehensive array of monitoring and control tools at your disposal.



2 Doors, 2 Readers



1 Door, 2 Readers