

Advanced alarm handling

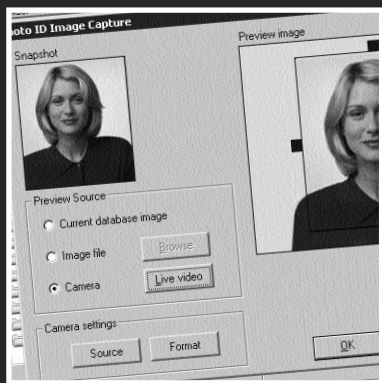


Photo ID option

eXcel² and eXpert² feature list

Feature	eXcel ² 1 door/2 door config	eXpert ² 1 door/2 door config
Maximum number of readers per door readers may have associated keypads	2/1	2/1
Reader technologies supported*	TDSi infra-red Microcard Mag-stripe Track 2 ABA Wiegand 26 BIT Proximity, eXsmart Mifare	TDSi infra-red Microcard Mag-stripe Track 2 ABA Wiegand 26 BIT Proximity, eXsmart Mifare
Egress inputs	1/2	1/2
Door sensor inputs	1/2	1/2
Card capacity	24,000	48,000
Spare inputs	6/4	6/4
Spare relays	3/2	3/2
Mantrap	No/Yes	No/Yes
Counters	16	16
Input/output expansion	No	Yes
4-door expansion option	No	Yes Card capacity is 24,000
Stand-alone programming/operation	No	Yes

* Only readers supplied by TDSi are supported. Other manufacturers' readers MAY work if the interface meets industry-standard clock/data or Wiegand specifications but this cannot be guaranteed – please contact your supplier for guidance.

eXcel² and eXpert² technical specification

Case dimensions (cm)	38h x 33w x 14d
Environment	Temperature -5° C to +45° C Humidity 0-95% rh non-condensing
Power 230V AC version	Input 220-240V AC 80VA max Output 12V DC 1A for ACU, 2 x 12V DC 1A for locks, 2 x 13.6V for standby batteries
Power 12V DC version	Input 12V DC 500 mA max
Relays	Form C changeover contacts rated at 30V 1A

Stand-alone feature list for eXpert²

As main list plus:

- Serial printer interface for event list, reports
- Event lists can use names instead of card numbers
- Hand-held menu-driven programmer for easy set-up

TDSi's unique reader technology, unrivalled in its all-weather performance and reliability, provides total security coupled with unbeatable value.

Although the traditional lock and key plays a major role in securing rooms, buildings and other areas, its shortcomings are obvious where large buildings or high security sites are concerned and personnel access has to be closely monitored and recorded.

The 'key' of an access control system may be a device such as a magnetically encoded card. The card offers much more security because it is much more difficult to copy. A card reader interprets the encoded card and controls an electric lock.

The advent of low cost personal computers and their associated software packages has dramatically increased the flexibility and features now available for access control, offering distinct user benefits.

eXguard PRO feature list

Max. card capacity	Unlimited card capacity of controllers is limited - see separate table
Max. doors	16 - Unlimited depends on licence
Max. operators	No limit
Anti pass-back	Timed or true*
Mantrap	Yes*
Time groups	64
Card expiry by date	Yes
Personnel data	18 fields
Site plans	Yes
Real-time event lists	Yes
Real-time alarm notification	Yes
Person tracking	Yes
Attendance reports	Yes
Real-time graphical status display	Yes e.g. doors open/closed
Full on-line help system	Yes
Full backup system	Yes
Communication methods	RS232, RS485 with converter, Ethernet (TCP/IP) with converter, Modem

*Mantrap and True Anti-passback decisions are made within the controller, therefore depend on configuration.

eXguard PRO system requirements

Minimum specification up to 16 ACUs and 500 Key Holders

Pentium P3, 1 GHz, 256 MB RAM, Windows 98/ME/NT/2000/XP, 10GB Hard Disk
Windows 98/ME is only suitable for eXguard LITE

Recommended spec up to 32 ACUs and 5000 Key Holders

Pentium P4, 1.5 GHz, 512MB RAM, Windows 2000, High spec graphics card
Max. 8 ACUs per com port, Max 2 com ports per computer, 30 GB Hard Disk,
2nd Hard disk on Database PC

Explorer always on separate PC from Database and comms

Becomes a multi-workstation installation – requires a suitable license

Above 32 ACUs or 5000 Key Holders

Please contact TDSi for advice

Other Considerations

Communication ports as required for direct or modem communication with ACUs

Communication over TCP/IP does not require physical communication ports

RS232/RS485 or Ethernet/RS485 converter(s) required

Parallel port for Licence Key

CD-ROM for installation of software

• Photo-ID Option

The optional Photo-ID feature provides eXguard PRO users with image capture and badge design functions that are fast, versatile and easy to use – ideal for further enhancing your security.

• Multi Workstations Option

Different people (e.g. personnel dept., security guards) in the organisation performing different functions in the system – or – in large organisations, different people administering their part of the system.



Time and Data Systems International

Sentinel House Nuffield Road Poole Dorset BH17 0RE

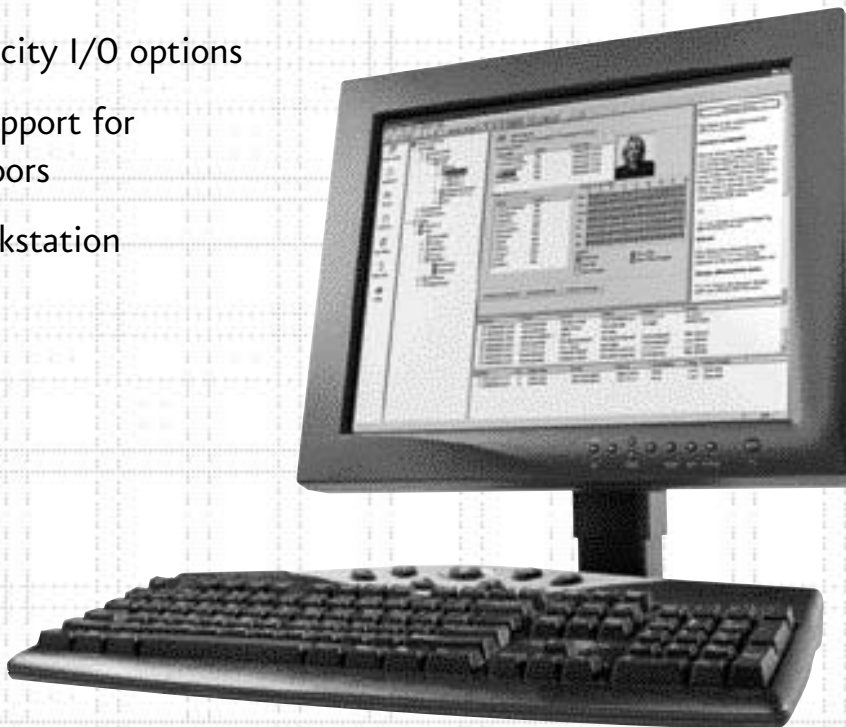
Tel 01202 666222 Fax 01202 679730 Email info@tdsi.co.uk Web www.tdsi.co.uk

eXguard PRO

eXguard PRO provides simple and effective monitoring and control of buildings and rooms for the smallest organisation through to multi-site, multi-tenant applications.

Features and Benefits

- Windows® 98/ME/NT/2000/XP application
- SQL database and multi workstation support via LAN/WAN
- Easy to install, configure and maintain.
- Instant visibility of information.
- Site graphics with real-time animation
- Advanced alarm handling
- Multiple real-time event windows
- Photo-ID badge option
- CCTV command interface
- High capacity I/O options
- Dial-up support for remote doors
- Multi-workstation options



ACCESS CONTROL

TDSi has a family of systems carefully designed after twenty years of listening to what our customers and users want.

Systems that are easy to install, simple to administer, designed for painless expansion, straightforward care and maintenance, and above all trouble-free operation for the life of the product, all backed by a comprehensive three year warranty. Who could ask for more?

TDSi's access control systems include on-line central computer(s) that record entries and exits by cardholders and store the card database and printer reports. It is now common practice to integrate additional security requirements onto the central PC to provide a cost-effective system solution.

Alarm management, audit trail and building management control, for example, can be integrated onto a central PC to provide a 'bespoke' system solution that is user friendly and allows the customer to realise the maximum potential from his/her investment.

TDSi's smart card and proximity technologies coupled with the unique infrared reader technology, unrivalled in its all-weather performance and reliability provides total security coupled with unbeatable value.

eXguard PRO has been designed to give you the best access control software in the industry. By that we mean the simplest and easiest to use, the fastest and most reliable to set up and yet it includes all the facilities you need to secure, manage, monitor and audit even the most complex installations.

Special Benefits of eXguard PRO

- True anti-passback
- Dial-up modems to remote ACUs
- Database import
- **Advanced Alarm Handling**
When an alarm occurs, eXguard Pro makes it impossible for the operator to ignore it, easy to see what caused it and easy to see what steps to take as a result. An operator can see if an alarm is already being dealt with by another operator, and the administrator can see later what happened and how it was dealt with. Alarms can also result in consequential triggering of relays, sounds and CCTV. Alarm Zones can be armed/disarmed manually or according to a schedule.
- **CCTV Command Interface**
Reduces the chance of missing incidents that are an inherent problem in unattended, random-sequencing systems.
- **Designed for Painless Expansion**
TDSi's access control systems easily expand to cover more doors or more computers or to enable monitoring of windows, doors and other sensitive areas of the site or to switch on lights, sounders or even move a camera to a pre-set position. We can also cater for those who prefer a mixture of monitoring and switching.

More features

Different operators have different rights

This increases security because they can't do any more than you want them to.

Lots of data stored against each person incl. photograph

Can be a substitute for a personnel database – finding someone based on data is easy. Privacy of data is protected by operator rights.

Restriction of people to areas and times

You have the control with temporary cards and multiple cards per person.

Adding people takes seconds

Access rights are per group. You just make someone a member of a group.

Event reports are easily created

This can be created for the whole system down to just one person or door.

Selection of events for alarms

You can choose which events are brought to your attention with alarms.

Easy to check

See who is in the building or an area. See at a glance whether doors are closed, inputs are active. e.g. window left open

Realistic Site Plans

Excellent representation of your site layout, showing doors, areas, readers, inputs, outputs.

Controllers work autonomously

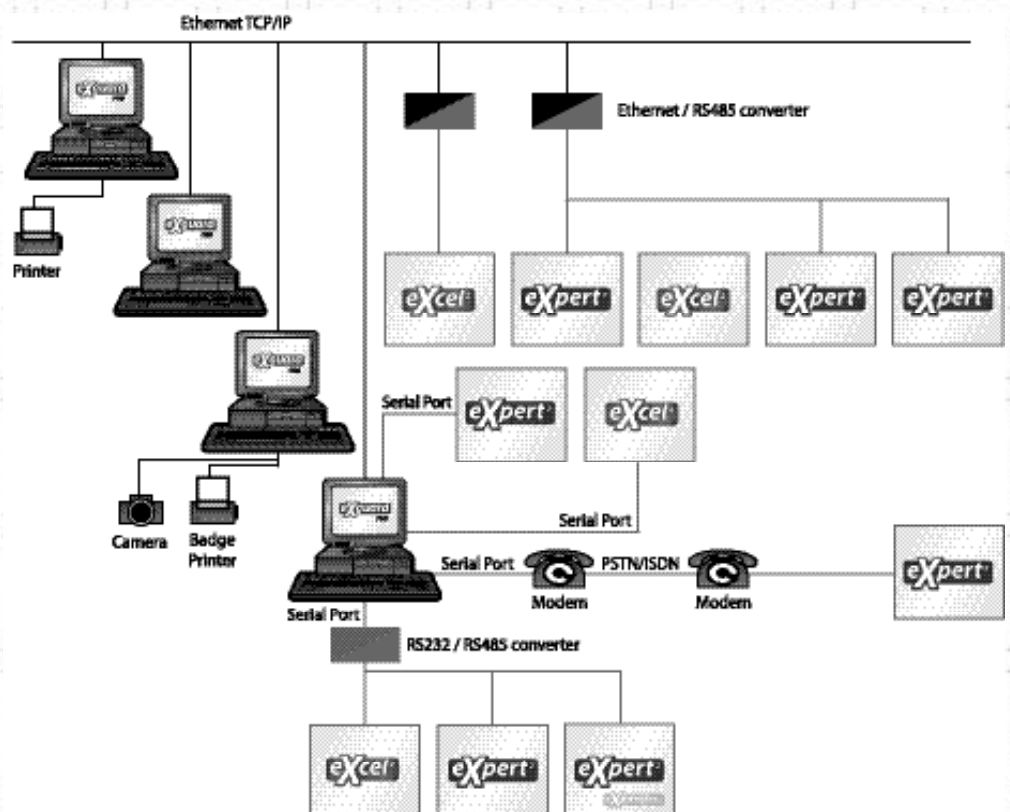
Full security at doors is maintained if a computer is off or if a communications line cut.

Car Park Control

A counter feature allows you to limit car park access.

Instant Occupancy Lists

On demand lists for the entire site, one area or a group of areas.

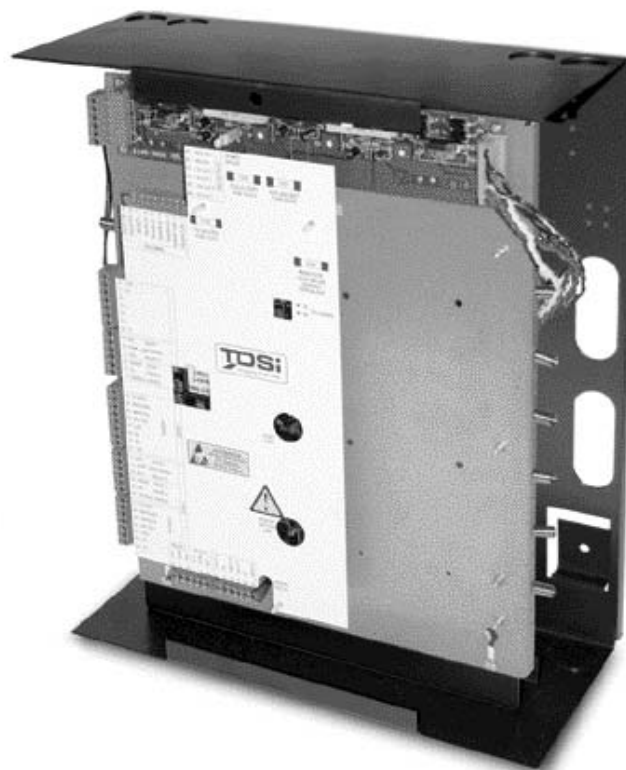




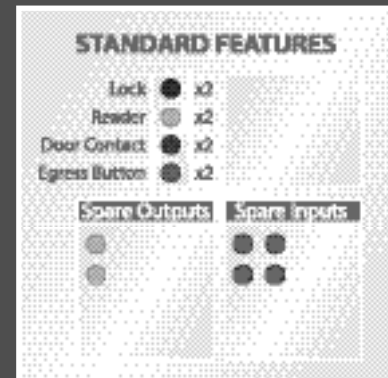
eXcel² is a 2-door controller that is programmed and monitored using TDSi's eXguard LITE software. The beauty of this system is its ease of installation and operation for up to 24,000 employees plus the power to upgrade to an almost limitless number of doors controlled and monitored using eXguard PRO.

Features and Benefits

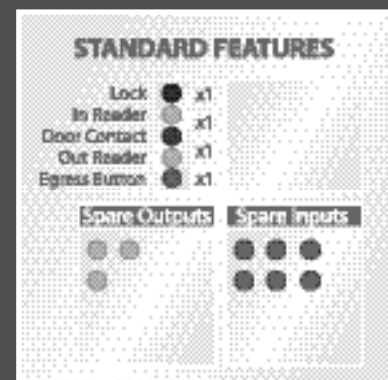
- Big system features at an entry-level price. Spare inputs for monitoring windows, etc. Spare outputs for alarms, heating, lighting, etc. Instant notification of unusual activity (e.g. access denied).
- Provides fast information on staff movements, etc. While stand-alone systems can control access, linked systems are essential to monitor access (not all staff can be trusted all of the time). The software also helps your organisation meet Health and Safety regulations and the Working Time Directive.
- Really easy to install and configure. During installation you can test each door without going back to the computer.
- 2 door controllers are better than single door controllers in terms of cost and installation time.
- 2 reader, 1 door configuration provides attendance monitoring and occupancy lists.



As well as having TDSi's legendary reliability and formidable build-quality, this system is totally flexible to your needs. An optional upgrade brings eXguard LITE to eXguard PRO status putting a highly sophisticated and comprehensive array of monitoring and control tools at your disposal.



2 Doors, 2 Readers



1 Door, 2 Readers

eXpert²

The eXpert² access controller has features that are second to none and accommodates connection via LAN/WAN as well as the traditional hard wired and dial-up options. eXpert² is a 2 door controller with 48,000 card capacity. Several upgrades are available.

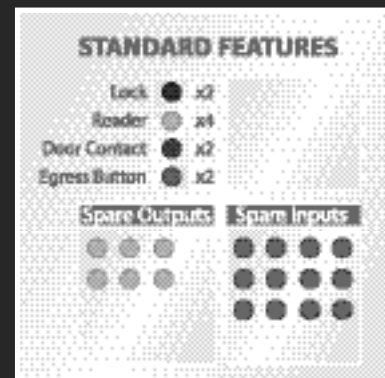
Features and Benefits

- eXpert² can work as a stand alone system or, for administration and control of a networked system, TDSi's comprehensive eXguard PRO software is available in different versions according to the size of the system.
- With an eXpander² circuit board, which fits neatly inside an eXpert² controller you can easily add 2 doors to make a 4 door controller.
- With an input/output board, large numbers of external devices can be monitored and controlled.
- eXpert² can also be used to further enhance and grow a system started using the eXcel² controllers.

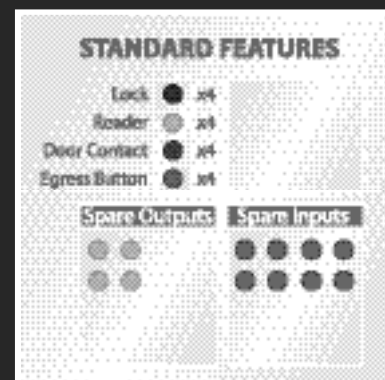


Something for the Engineers!

To avoid engineers having to rush backwards and forwards between access controllers and the PC, TDSi has been very thoughtful in producing an eXkeypad which can be plugged into the eXpert² to perform simple set up and diagnostic routines.



2 Doors, 4 Readers



4 Doors, 4 Readers

You can add inputs and outputs to give almost unlimited expansion of site alarm monitoring - there's a choice of three circuit boards eXin³², eXout³² or the eXin³²/out³².